

SARACINESCA A TENUTA METALLICA - CORPO PIATTO PN10

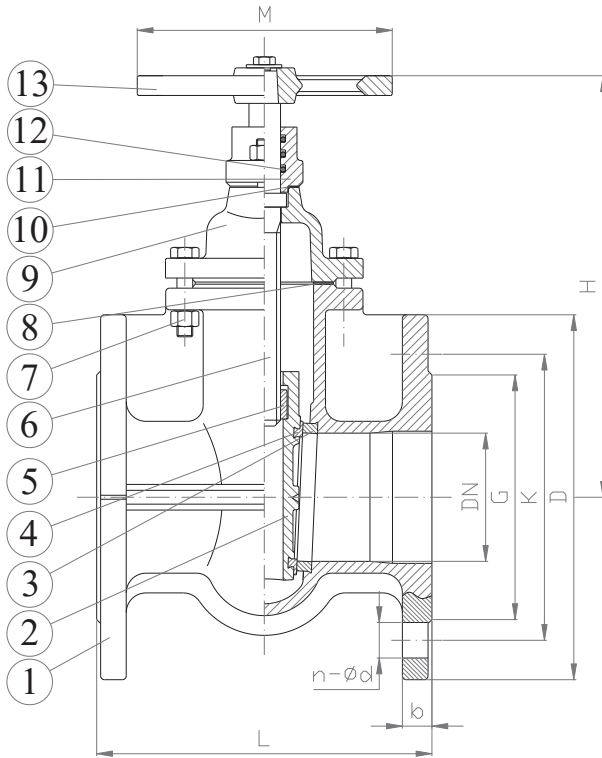
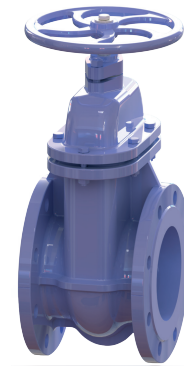
METAL SEATED GATE VALVE - SHORT BODY PN10

APPLICAZIONE:

Acqua e altri liquidi non pericolosi (compatibili con i materiali della valvola).

APPLICATION:

Water and other non-hazardous liquids (compatible with valve materials).



DN	G	K	D	L	H	M	n-ød	b	W (kg)
40	84	110	150	140	194	130	4-19	18	9.5
50	99	125	165	150	204	130	4-19	20	11.4
65	118	145	185	170	226	130	4-19	20	14
80	132	160	200	180	254	150	*8-19	22	17
100	156	180	220	190	295	185	8-19	24	24
125	184	210	250	200	351	185	8-19	26	35
150	211	240	285	210	413	195	8-23	26	45
200	266	295	340	230	498	225	8-23	26	78
250	319	350	395	250	579	245	12-23	28	105
300	370	400	445	270	679	285	12-23	28	151

*Disponibile anche con 4 fori /*Available also with 4 holes

CARATTERISTICHE PRINCIPALI - MAIN FEATURES

NORMA PROGETTO:	EN 1171 EN 1074-1 ed EN 1074-2
SCARTAMENTO:	EN 558 Serie14
FLANGE:	EN 1092-2
COLLAUDI:	EN 12266-1
PRESSIONE ESERCIZIO:	10 bar (DN40 -DN300)
TEMPERATURA ESERCIZIO:	Max. +90°C

DESIGN STANDARD:	EN 1171 EN 1074-1 and EN 1074-2
FACE TO FACE:	EN 558 Series14
FLANGES:	EN 1092-2
TESTS:	EN 12266-1
WORKING PRESSURE:	10 bar (DN40 -DN300)
WORKING TEMPERATURE:	Max. +90°C

	COMPONENTI - PARTS	MATERIALI - MATERIALS
1	CORPO BODY	EN-GJL 250 EN-GJL 250
2	CUNEO WEDGE	EN-GJL 250 EN-GJL 250
3	ANELLO DI TENUTA SEALING RING	OTTONE BRASS
4	ANELLO DI TENUTA SEALING RING	OTTONE BRASS
5	MADREVITE STEM NUT	OTTONE BRASS
6	ASSE STEM	ACC.INOX AISI 420 (EN 1.4021) SS AISI 420 (EN 1.4021)
7	VITE E DADO BOLT AND NUT	ACCIAIO ZINCATO 8.8 GALVANIZED STEEL 8.8
8	GUARNIZIONE GASKET	GRAFITE GRAPHITE
9	CAPPELLO BONNET	EN-GJL 250 EN-GJL 250
10	GUARNIZIONE GASKET	GRAFITE GRAPHITE
11	PREMISTOPPA PACKING GLAND	EN-GJL 250 EN-GJL 250
12	O-RING O-RING	NBR NBR
13	VOLANTINO HANDWHEEL	EN-GJL 250 EN-GJL 250

RIVESTIMENTO - COATING

Esterno/interno di colore blu RAL 5000.

External/internal coating of blue colour RAL 5000.