

BILL OF MATERIALS

ITEM	PARTS NAME	MATERIAL			NOTE
1	BODY	ASTM A105	ASTM A350 LF2	ASTM A479 GR.316/L	
2	CLOSURE	ASTM A105	ASTM A350 LF2	ASTM A479 GR.316/L	
3	BALL	ASTM A479 GR.316/L	ASTM A479 GR.316/L	ASTM A479 GR.316/L	
4	STEM	ASTM A479 GR.316/L	ASTM A479 GR.316/L	ASTM A479 GR.316/L	
5	STOP	CARBON STEEL	CARBON STEEL	CARBON STEEL	*1
6	NUTS	GR6S	GR6S	GR6S	*1
7	SEATS	RPTFE	RPTFE	RPTFE	
8	LEVER	CARBON STEEL	CARBON STEEL	CARBON STEEL	*1
9	PRESSING BUSH	CARBON STEEL	CARBON STEEL	CARBON STEEL	*1
10	STOP	CARBON STEEL	CARBON STEEL	CARBON STEEL	*1
11	O-RING	VITON	VITON	VITON	
12	SPRINGS	C.72	C.72	C.72	*1
13	STEM GASKETS	RPTFE	RPTFE	RPTFE	

RECOMENDED SPARE PARTS

NOTE:

*1 - GALVANIZED

GENERAL NOTES:

- VALVE DESIGN ACCORDING TO API 6D, ASME B16.34, ISO 17292
- VALVE MATERIAL ACCORDING TO NACE MR 01-75 / ISO 15156
- FIRE SAFE DESIGN AS PER API 607, ISO 10497, API 6FA
- SW END : ASME B16.11
- END TO END DIMENSIONS : MANUFACTURE'S STD
- LEVER DIMENSIONS : TOLERANCE ±20mm
- ANTIBLOW-OUT STEM
- ANTISTATIC DEVICE
- BI-DIRECTIONAL VALVE
- CARBON STEEL VALVES ARE GALVANIZED OR STANDARD MAGIVAL COATED
- VALVE PAINTING: AS PER RAL.7031
- PRESSURE TESTS: HYDROSTATIC BODY AND SEAT TEST, PNEUMATIC LOW PRESSURE AIR TEST AS PER API 6D

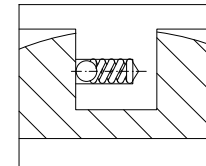
(*) FOR A350 LF2 -46°C

Q.TY	SIZE	BORE	CLASS	ENDS	DESIGN TEMP.	L	ØD	A	H	WEIGHT
1	1/2"	RB	800#	SW	-29°(*)/ +150°	237	11	150	62	TBA
1	3/4"	RB	800#	SW	-29°(*)/ +150°	241	14	150	70	TBA
1	1"	RB	800#	SW	-29°(*)/ +150°	253	20	185	80	TBA
1	1 1/4"	RB	800#	SW	-29°(*)/ +150°	264	25	185	90	TBA
1	1 1/2"	RB	800#	SW	-29°(*)/ +150°	271	32	285	95	TBA
1	2"	RB	800#	SW	-29°(*)/ +150°	281	38	285	100	TBA
1	2 1/2"	RB	800#	SW	-29°(*)/ +150°	300	48	285	105	TBA
1	3"	RB	800#	SW	-29°(*)/ +150°	305	65	380	160	TBA
1	4"	RB	800#	SW	-29°(*)/ +150°	315	75	380	203	TBA

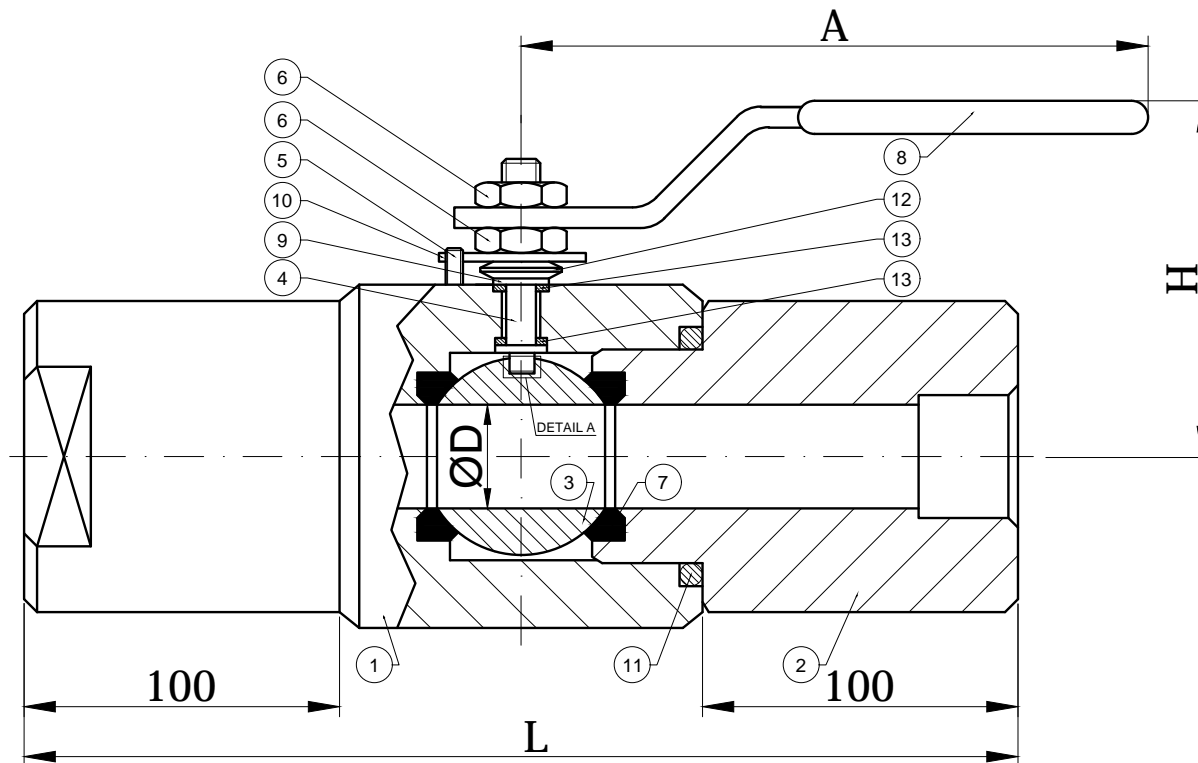
OVERALL DIMENSIONS

GENERAL ASSEMBLY DRAWING

ANTISTATIC DEVICE



DETAIL A



<input checked="" type="checkbox"/> PRELIMINARY	<input type="checkbox"/> FOR APPROVAL	<input type="checkbox"/> FINAL DRAWING
Date: 08/04/2018	Drawn: R.Ferrarese	Approved: M.Possamai
A4		Offer N°: SW FULL
MONOBLOCK VALVE MG60		Drawing N°: CLASS 800#
-Dimensions are in mm -Weight are in Kg -Do not scale drawing -Dimensions are subject to change without notice		Rev: 0