

3000 lbs

SIZE	B1		B2		D		C	J	E	E	Peso Kg./Cad. Weight Kilos/Each
	Min.	Max.	Min.	Max.	Min.	Max.					
¼" x ⅛"	14.2	14.6	10.8	11.2	6.1	7.6	3.30	9.5	6.5	1.5	0.072
⅜" x ¼"	17.6	18.0	10.8	11.2	6.1	7.6	3.50	9.5	6.5	1.5	0.102
	17.6	18.0	14.2	14.6	8.5	10.0	3.50	9.5	6.5	3.0	0.102
½" x ⅜"	21.8	22.2	14.2	14.6	8.5	10.0	4.09	9.5	9.5	3.0	0.180
	21.8	22.2	17.6	18.0	11.8	13.3	4.09	9.5	9.5	3.0	0.180
¾" x ½"	27.2	27.6	17.6	18.0	11.8	13.3	4.27	12.5	9.5	3.0	0.252
	27.2	27.6	21.8	22.2	15.0	16.6	4.27	12.5	9.5	3.0	0.252
1" x ¾"	33.9	34.3	21.8	22.2	15.0	16.6	4.98	12.5	12.5	4.0	0.420
	33.9	34.3	27.2	27.6	20.2	21.7	4.98	12.5	12.5	4.0	0.420
1 ¼" x 1"	42.7	43.1	21.8	22.2	15.0	16.6	5.28	12.5	12.5	4.0	0.570
	42.7	43.1	27.2	27.6	20.2	21.7	5.28	12.5	12.5	4.0	0.570
	42.7	43.1	33.9	34.3	25.9	27.4	5.28	12.5	12.5	4.0	0.570
1 ½" x 1 ¼"	48.8	49.2	21.8	22.2	15.0	16.6	5.54	12.5	12.5	4.0	0.744
	48.8	49.2	27.2	27.6	20.2	21.7	5.54	12.5	12.5	4.0	0.744
	48.8	49.2	33.9	34.3	25.9	27.4	5.54	12.5	12.5	4.0	0.744
	48.8	49.2	42.7	43.1	34.3	35.8	5.54	12.5	12.5	4.0	0.744
2" x 1 ½"	61.2	61.7	21.8	22.2	15.0	16.6	6.04	16.0	19.0	4.0	1.260
	61.2	61.7	27.2	27.6	20.2	21.7	6.04	16.0	19.0	4.0	1.260
	61.2	61.7	33.9	34.3	25.9	27.4	6.04	16.0	19.0	4.0	1.260
	61.2	61.7	42.7	43.1	34.3	35.8	6.04	16.0	19.0	4.0	1.260
	61.2	61.7	48.8	49.2	40.1	41.6	6.04	16.0	19.0	4.0	1.260
2 ½" x 2"	73.9	74.4	21.8	22.2	15.0	16.6	7.67	16.0	19.0	5.0	1.980
	73.9	74.4	27.2	27.6	20.2	21.7	7.67	16.0	19.0	5.0	1.980
	73.9	74.4	33.9	34.3	25.9	27.4	7.67	16.0	19.0	5.0	1.980
	73.9	74.4	42.7	43.1	34.3	35.8	7.67	16.0	19.0	5.0	1.980
	73.9	74.4	48.8	49.2	40.1	41.6	7.67	16.0	19.0	5.0	1.980
	73.9	74.4	61.2	61.7	51.7	53.3	7.67	16.0	19.0	5.0	1.980
3" x 2 ½"	89.8	90.3	21.8	22.2	15.0	16.6	8.30	16.0	19.0	5.0	2.640
	89.8	90.3	27.2	27.6	20.2	21.7	8.30	16.0	19.0	5.0	2.640
	89.8	90.3	33.9	34.3	25.9	27.4	8.30	16.0	19.0	5.0	2.640
	89.8	90.3	42.7	43.1	34.3	35.8	8.30	16.0	19.0	5.0	2.640
	89.8	90.3	48.8	49.2	40.1	41.6	8.30	16.0	19.0	5.0	2.640
	89.8	90.3	61.2	61.7	51.7	53.3	8.30	16.0	19.0	5.0	2.640
	89.8	90.3	73.9	74.4	61.2	64.2	8.30	16.0	19.0	5.0	2.640
4" x 3"	115.2	115.7	21.8	22.2	15.0	16.6	9.35	19.0	19.0	5.0	4.148
	115.2	115.7	27.2	27.6	20.2	21.7	9.35	19.0	19.0	5.0	4.148
	115.2	115.7	33.9	34.3	25.9	27.4	9.35	19.0	19.0	5.0	4.148
	115.2	115.7	42.7	43.1	34.3	35.8	9.35	19.0	19.0	5.0	4.148
	115.2	115.7	48.8	49.2	40.1	41.6	9.35	19.0	19.0	5.0	4.148
	115.2	115.7	61.2	61.7	51.7	53.3	9.35	19.0	19.0	5.0	4.148
	115.2	115.7	73.9	74.4	61.2	64.2	9.35	19.0	19.0	5.0	4.148
	115.2	115.7	89.8	90.3	76.4	79.4	9.35	19.0	19.0	5.0	4.148

Note:

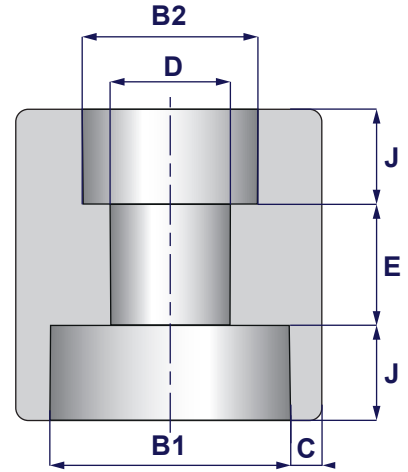
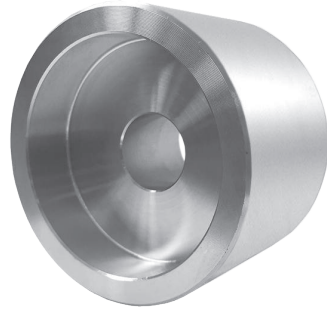
- Dimensioni in millimetri
- Dimensioni in accordo ANSI B 16.11
- I pesi sono indicativi

Remarks:

- Dimensions are in millimeters
- Dimensions in compliance with ANSI B 16.11
- Weights are approximate

**MANICOTTO TASCIA RIDOTTO 3000 lbs
REDUCING SOCKET WELD COUPLING 3000 lbs**

**MANICOTTO TASCA RIDOTTO 6000 lbs
REDUCING SOCKET WELD COUPLING 6000 lbs**



6000 lbs

SIZE	B1		B2		D		C	J	E	E	Peso Kg./Cad. Weight Kilos/Each
	Min.	Max.	Min.	Max.	Min.	Max.					
1/4" x 1/8"	14.2	14.6	10.8	11.2	3.2	4.8	4.01	9.5	6.5	1.5	0.090
3/8" x 1/8"	17.6	18.0	10.8	11.2	3.2	4.8	4.37	9.5	6.5	3.0	0.132
	17.6	18.0	14.2	14.6	5.6	7.1	4.37	9.5	6.5	3.0	0.132
1/2" x 1/4"	21.8	22.2	14.2	14.6	5.6	7.1	5.18	9.5	9.5	3.0	0.240
	21.8	22.2	17.6	18.0	8.4	9.9	5.18	9.5	9.5	3.0	0.240
3/4" x 3/8"	27.2	27.6	17.6	18.0	8.4	9.9	6.04	12.5	9.5	3.0	0.372
	27.2	27.6	21.8	22.2	11.0	12.5	6.04	12.5	9.5	3.0	0.372
1" x 1/2"	33.9	34.3	21.8	22.2	11.0	12.5	6.93	12.5	12.5	4.0	0.600
	33.9	34.3	27.2	27.6	14.8	16.3	6.93	12.5	12.5	4.0	0.600
1 1/4" x 3/4"	42.7	43.1	21.8	22.2	11.0	12.5	6.93	12.5	12.5	4.0	0.792
	42.7	43.1	27.2	27.6	14.8	16.3	6.93	12.5	12.5	4.0	0.792
	42.7	43.1	33.9	34.3	19.9	21.5	6.93	12.5	12.5	4.0	0.792
1 1/2" x 1"	48.8	49.2	21.8	22.2	11.0	12.5	7.80	12.5	12.5	4.0	1.068
	48.8	49.2	27.2	27.6	14.8	16.3	7.80	12.5	12.5	4.0	1.068
	48.8	49.2	33.9	34.3	19.9	21.5	7.80	12.5	12.5	4.0	1.068
	48.8	49.2	42.7	43.1	28.7	30.2	7.80	12.5	12.5	4.0	1.068
2" x 1 1/2"	61.2	61.7	21.8	22.2	11.0	12.5	9.50	16.0	19.0	4.0	2.040
	61.2	61.7	27.2	27.6	14.8	16.3	9.50	16.0	19.0	4.0	2.040
	61.2	61.7	33.9	34.3	19.9	21.5	9.50	16.0	19.0	4.0	2.040
	61.2	61.7	42.7	43.1	28.7	30.2	9.50	16.0	19.0	4.0	2.040
	61.2	61.7	48.8	49.2	33.2	34.7	9.50	16.0	19.0	4.0	2.040

Note:

- Dimensioni in millimetri
- Dimensioni in accordo ANSI B 16.11
- I pesi sono indicativi

Remarks:

- Dimensions are in millimeters
- Dimensions in compliance with ANSI B 16.11
- Weights are approximate